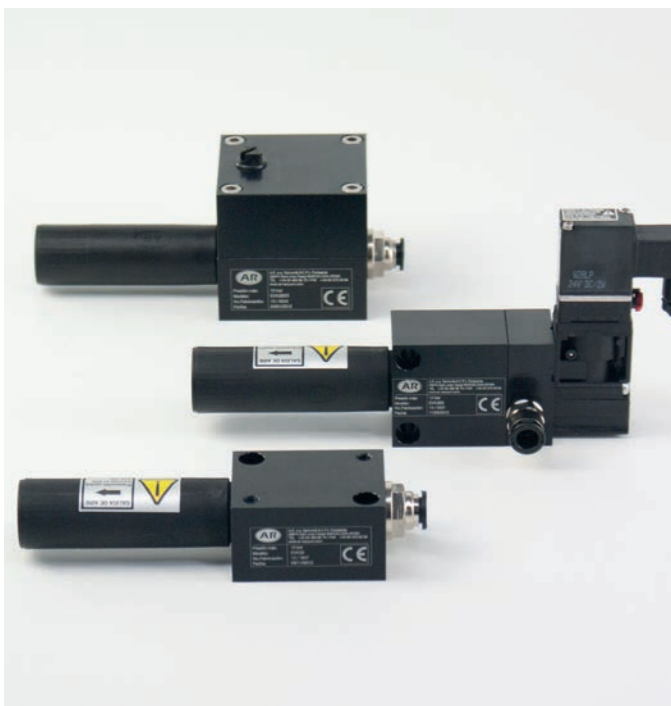


GENERADORES DE VACÍO

VACUUM GENERATORS

MONOETAPA
MONOSTAGE

K3B



CARACTERÍSTICAS · CHARACTERISTICS

| | |
|--|----------|
| Depresión máx. <i>Max vacuum degree</i> | [mbar] |
| Máx. caudal aspirado <i>Max suction air flow</i> | [NI/min] |
| Caudal consumido <i>Air flow consumption</i> | [NI/min] |
| Presión de alimentación <i>Supply pressure</i> | [bar] |
| Nivel de ruido en carga <i>Working Noise level</i> | [dB] |
| Potencia absorbida <i>Power consumption</i> | [W] |
| Puerto de alimentación <i>Supply port</i> | |
| Puerto de vacío <i>Vacuum port</i> | |
| <i>Materials</i> | |
| Temperatura de trabajo <i>Working Temperature</i> | [°C] |
| Peso <i>Weight</i> | [g] |

CÓMO PEDIR · HOW TO ORDER

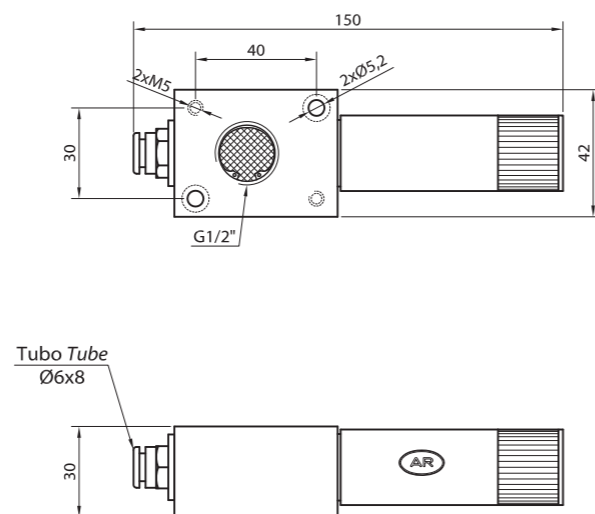
| |
|---|
| Eyector básico con cuerpo de aluminio <i>Basic ejector with aluminium</i> |
| Eyector básico con cuerpo de plástico <i>Basic ejector with plastic body</i> |
| Eyector con electroválvula 24 V CC / 24 V CA / 220 V CA <i>Ejector with valve 24 V DC / 24 V AC / 220 V AC</i> |
| Eyector con expulsión rápida <i>Ejector with quick release</i> |
| Silenciador recambio <i>Spare silencer</i> |
| Electroválvula recambio 24 V CC / 24 V CA / 220 V CA <i>Spare solenoid valve 24 V DC / 24 V AC / 220 V AC</i> |

+ INFO



AQ y AQ+: mayor caudal aspirado libre para aplicaciones porosas o con menores tiempos de evacuación requeridos.
AQ and AQ+: greater suction free flow, for porous applications or when lower evacuation times are required.

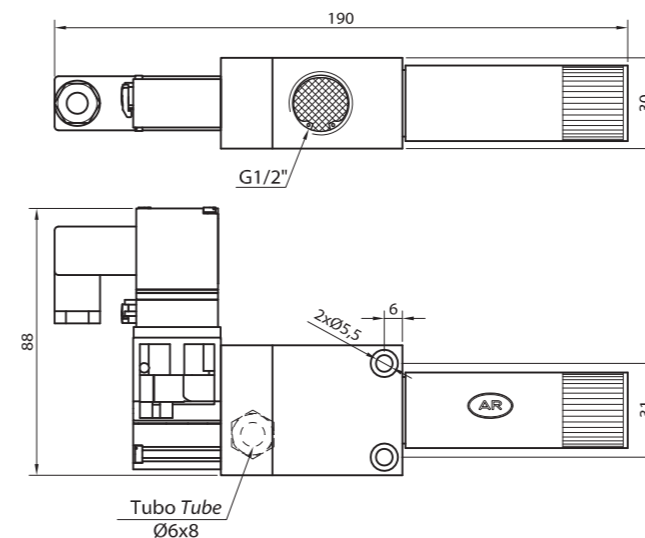
K3B



| STD | AQ | AQ+ |
|---------------------------|---------------------------|---------------------------|
| -920 | -720 | -450 |
| 120 | 202 | 290 |
| 120 | 120 | 140 |
| 4 ... 6 | 4 ... 6 | > 5 |
| 75 | 80 | 80 |
| -- | -- | -- |
| T8x6 | T8x6 | T8x6 |
| G1/2" | G1/2" | G3/8" |
| Al / POM, latón, PEAD, PP | Al / POM, brass, HDPE, PP | Al / POM, brass, HDPE, PP |
| -20 ... 70 | -20 ... 70 | -20 ... 70 |
| 120 / 190 | 120 / 190 | 120 / 190 |

| | | |
|----------|-----------|-------------|
| EVK3B | EVK3BAQ | EVK3BAQE4 |
| EVK3BPL | EVK3BAQPL | EVK3BAQE4PL |
| -- | -- | -- |
| -- | -- | -- |
| SILRL1/2 | SILRL1/2 | SILRL1/2 |
| -- | -- | -- |

K3B S

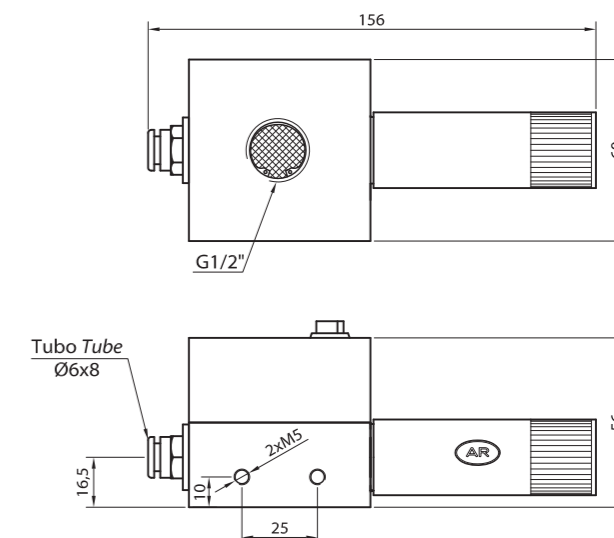


| STD | AQ | AQ+ |
|---------------------------|---------------------------|---------------------------|
| -920 | -720 | -450 |
| 120 | 202 | 290 |
| 120 | 120 | 140 |
| 4 ... 6 | 4 ... 6 | > 5 |
| 75 | 80 | 80 |
| 2 | 2 | 2 |
| T8x6 | T8x6 | T8x6 |
| G1/2" | G1/2" | G3/8" |
| Al / POM, latón, PEAD, PP | Al / POM, brass, HDPE, PP | Al / POM, brass, HDPE, PP |
| -20 ... 70 | -20 ... 70 | -20 ... 70 |
| 240 / 290 | 240 / 290 | 240 / 290 |

| | | |
|-----------------------------|-------------------------------|---------------------------------|
| -- | -- | -- |
| -- | -- | -- |
| EVK3BS__ 24C / 24A / 220 | EVK3BS__AQ 24C / 24A / 220 | EVK3BS__AQE4 24C / 24A / 220 |
| -- | -- | -- |
| SILRL1/2 | SILRL1/2 | SILRL1/2 |
| EVASBUR6__ 24C* / 220C* | EVASBUR6__ 24C* / 220C* | EVASBUR6__ 24C* / 220C* |

*Utilizar conector con rectificador para CA Use a connector with CA rectifier

K3B ER



| STD | AQ | AQ+ |
|---------------------------|---------------------------|---------------------------|
| -920 | -720 | -450 |
| 120 | 202 | 290 |
| 120 | 120 | 140 |
| 4 ... 6 | 4 ... 6 | > 5 |
| 75 | 80 | 80 |
| -- | -- | -- |
| T8x6 | T8x6 | T8x6 |
| G1/2" | G1/2" | G3/8" |
| Al / POM, latón, PEAD, PP | Al / POM, brass, HDPE, PP | Al / POM, brass, HDPE, PP |
| -20 ... 70 | -20 ... 70 | -20 ... 70 |
| 371 / 515 | 371 / 515 | 371 / 515 |

| | | |
|----------|-----------|-------------|
| -- | -- | -- |
| -- | -- | -- |
| -- | -- | -- |
| EVK3BER | EVK3BERAQ | EVK3BERAQE4 |
| SILRL1/2 | SILRL1/2 | SILRL1/2 |
| -- | -- | -- |



K3B | INFORMACIÓN TÉCNICA
TECHNICAL DATA

| | [mbar] |
|---|--------|
| Tiempo de evacuación* [s] Evacuation time* [s] | -100 |
| | -200 |
| | -300 |
| | -400 |
| | -500 |
| | -600 |
| | -700 |
| | -800 |
| -900 | |

| K3B | | |
|-----|-----|-----|
| STD | AQ | AQ+ |
| 0,9 | 0,5 | 0,3 |
| 2,1 | 1,1 | 0,9 |
| 3,6 | 2 | 1,9 |
| 5,5 | 3,1 | 4,3 |
| 8,1 | 4,7 | -- |
| 12 | 7,8 | -- |
| 17 | 18 | -- |
| 28 | -- | -- |
| 65 | -- | -- |

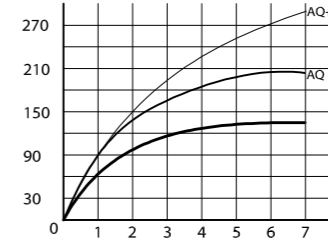
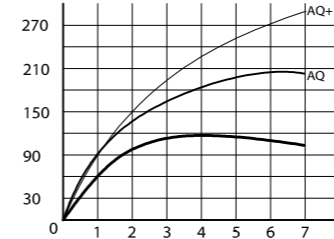
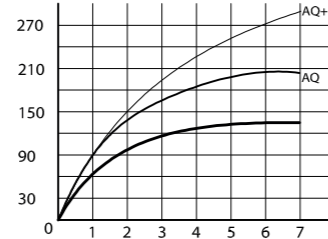
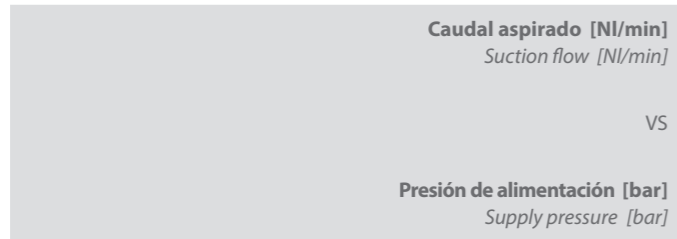
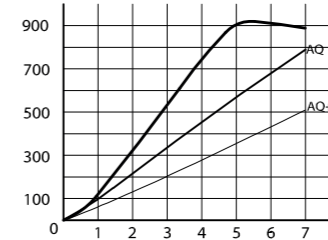
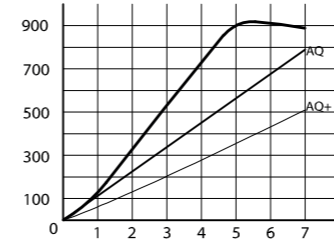
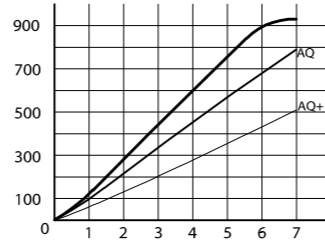
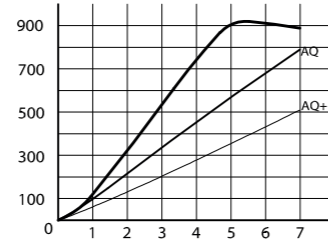
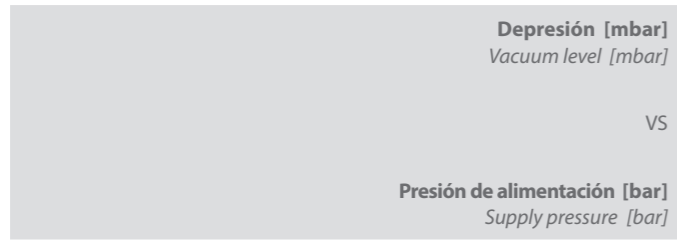
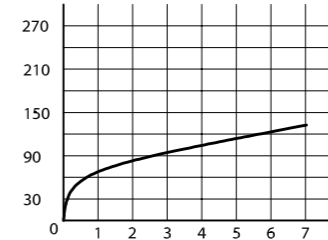
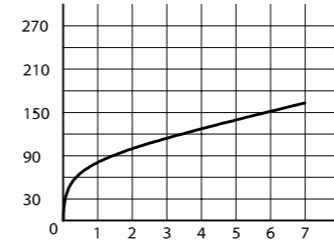
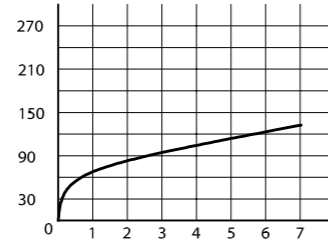
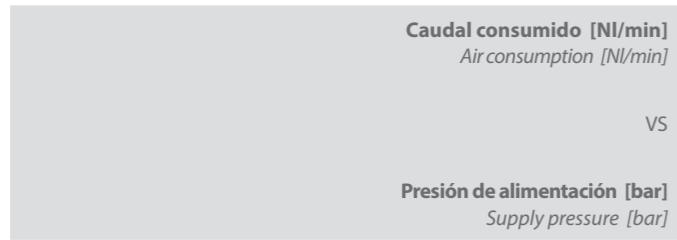
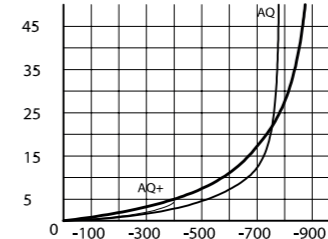
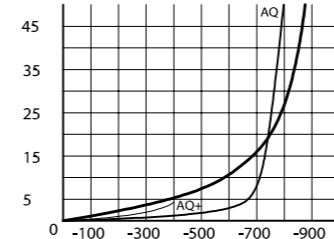
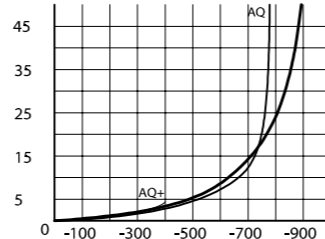
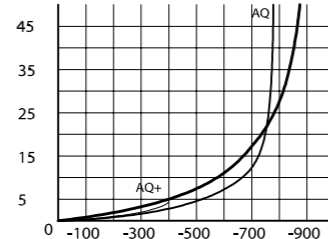
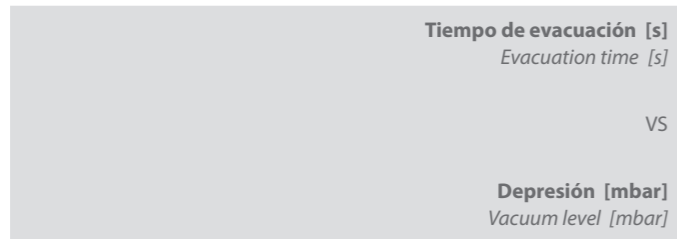
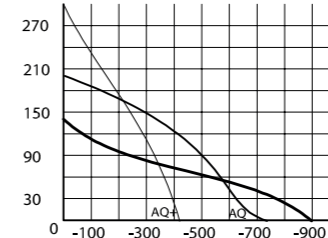
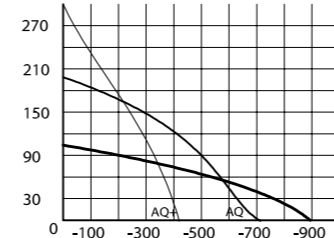
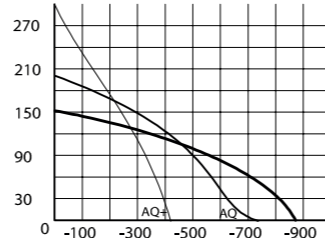
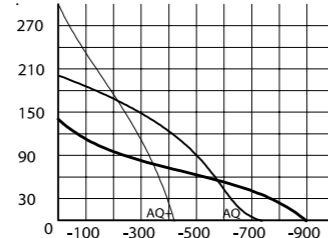
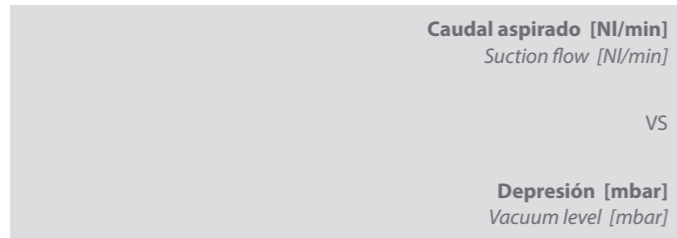
| K3B S | | |
|-------|-----|-----|
| STD | AQ | AQ+ |
| 0,9 | 0,5 | 0,3 |
| 2,1 | 1,1 | 0,9 |
| 3,6 | 2 | 1,9 |
| 5,5 | 3,1 | 4,3 |
| 8,1 | 4,7 | -- |
| 12 | 7,8 | -- |
| 17 | 18 | -- |
| 28 | -- | -- |
| 65 | -- | -- |

+ INFO > AQ y AQ+: mayor caudal aspirado libre para aplicaciones porosas o con menores tiempos de evacuación requeridos.
AQ and AQ+: greater suction free flow, for porous applications or when lower evacuation times are required.

| K3B ER | | |
|--------|-----|-----|
| STD | AQ | AQ+ |
| 0,9 | 0,5 | 0,3 |
| 2,1 | 1,1 | 0,9 |
| 3,6 | 2 | 1,9 |
| 5,5 | 3,1 | 4,3 |
| 8,1 | 4,7 | -- |
| 11,6 | 7,8 | -- |
| 17,3 | 9,5 | -- |
| 28,4 | -- | -- |
| 64,9 | -- | -- |

| K3B V | | |
|-------|-----|-----|
| STD | AQ | AQ+ |
| 0,9 | 0,5 | 0,3 |
| 2,1 | 1,1 | 0,9 |
| 3,6 | 2 | 1,9 |
| 5,5 | 3,1 | 4,3 |
| 8,1 | 4,7 | -- |
| 12 | 7,8 | -- |
| 17 | 18 | -- |
| 28 | -- | -- |
| 65 | -- | -- |

* Para un depósito de 25 L For 25 L tank



GENERADORES
GENERATORS

GENERADORES
GENERATORS